

FINAL PLOT

Belmont Place Third Addition

City of Augusta, Butler County, Kansas

Part of NW/4 And NE/4 of Sec. 14, T27S, R4E

Mandatory Master Drainage Plan

Per City Ordinance #1813

PLANNING AGENCY CERTIFICATE

STATE OF KANSAS }
CITY OF AUGUSTA } ss

This plat was approved by the Augusta City Planning Board on this 23rd day of October, 2006 and was recommended for approval by the Augusta City Commissioners.

Date Signed: 10-23-06

David Berndsen
David Berndsen, Chairman

Attest:

Nancy Turnage
Nancy Turnage, Secretary

GOVERNING BODY CERTIFICATE

STATE OF KANSAS }
CITY OF AUGUSTA } ss

This plat is approved and all dedications shown on this plat are hereby accepted by the Augusta City Commission on this

6th day of November, 2006. Ross Rountree
Ross Rountree, Mayor

Attest: Erica L. Jones
Erica L. Jones, City Clerk

CITY ATTORNEY'S CERTIFICATE

STATE OF KANSAS }
CITY OF AUGUSTA } ss

This plat is approved as an addition to the City of Augusta, Kansas pursuant to the provisions of K.S.A.12-401.

Date Signed: November 17, 2006 David A. All
David A. All, City Attorney

CERTIFICATION

Reviewed in accordance with K.S.A. 58-2005 on this 29th day of November, 2006.

Michael A. Work
Michael A. Work R.L.S. Number 1160
Appointed Land Surveyor, Butler County, Kansas



REGISTER OF DEEDS CERTIFICATE

STATE OF KANSAS }
COUNTY OF BUTLER } ss

This is to certify that this instrument was filed for record in the Register of Deeds office at 4:44 pm on the 29th day of November, 2006 and is duly recorded in Book Q at Page 528. Fee: \$20.00



Marcia McCoy
Marcia McCoy, Register of Deeds

TRANSFER RECORD

Entered on transfer record this 29 day of Nov, 2006.

Ronald Roberts by Nadine M. Codd
Ronald Roberts, County Clerk

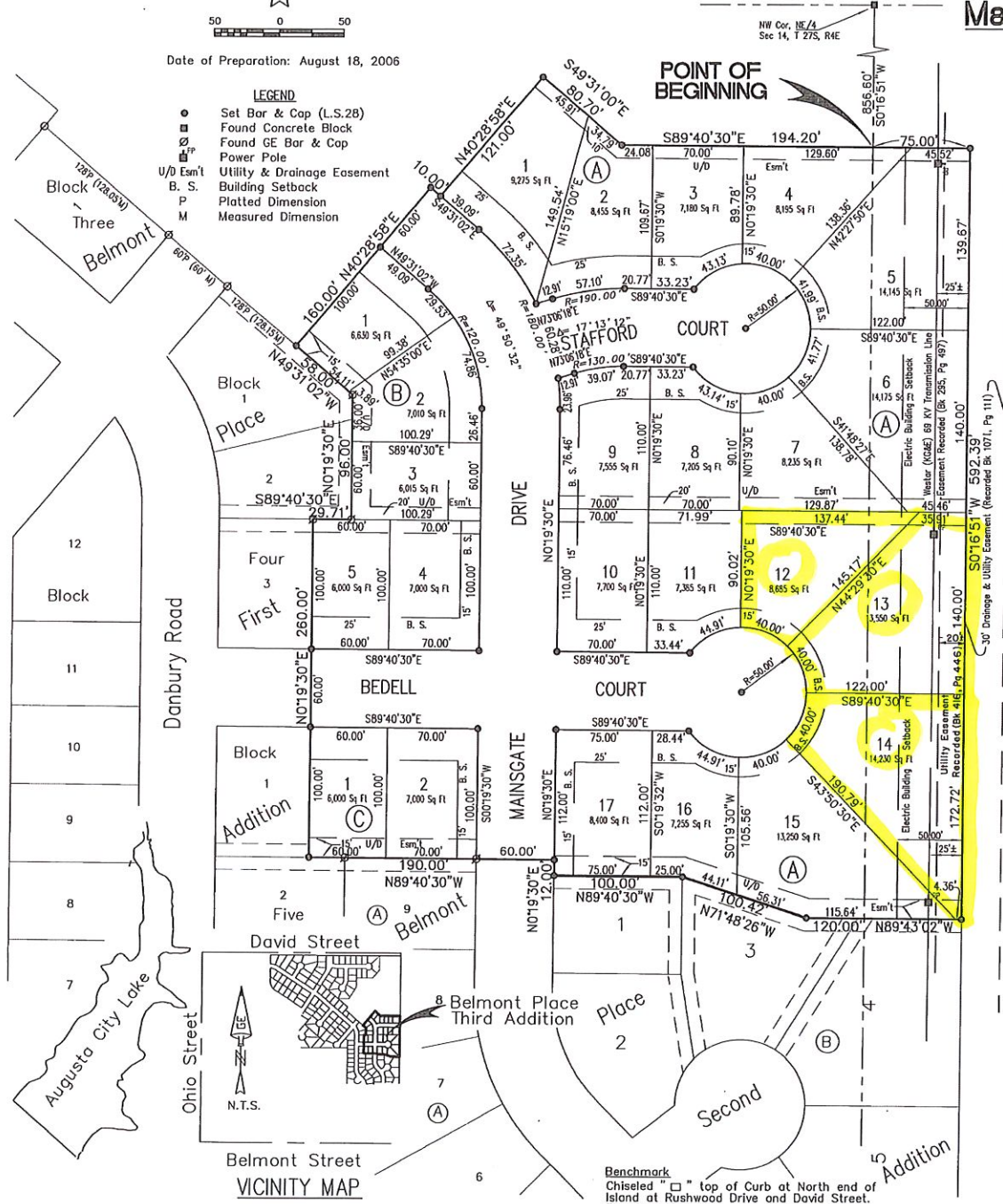


Prepared by:
Goedecke Engineering Co.
205 South Main
El Dorado, Kansas 67042
316 321-3773
Fax: 7172-10167

Date of Preparation: August 18, 2006

LEGEND

- Set Bar & Cap (L.S.2B)
- Found Concrete Block
- Found GE Bar & Cap
- Power Pole
- Utility & Drainage Easement
- Building Setback
- Platted Dimension
- Measured Dimension



I, the undersigned Registered Land Surveyor in the State of Kansas do hereby certify that the following described tract of land was surveyed this the 30th day of October, 2006 and the accompanying final plat was prepared and that all of the monuments shown hereon actually exist and their positions are correctly shown to the best of my knowledge and belief.

A tract of land lying in the Northwest Quarter (NW/4) and the Northeast Quarter (NE/4) of Section 14 Township 27 South, Range 4 East of the Sixth Principal Meridian in Butler County, Kansas described as follows: Beginning on the West line and 856.60 feet South of the Northwest Corner of said Northeast Quarter, said West line having an assumed bearing of South 0 degrees 16 minutes 51 seconds West; thence on a bearing of South 89 degrees 40 minutes 30 seconds East 75.00 feet; thence on a bearing of South 0 degrees 16 minutes 51 seconds West 592.39 feet parallel with said West quarter section line to the Northeast corner of Belmont Place Second Addition, Augusta, Butler County, Kansas; thence along said North line of said Belmont Place Second Addition with the preceding bearings and distances; thence on a bearing of North 89 degrees 43 minutes 02 seconds West 120.00 feet; thence on a bearing of North 71 degrees 48 minutes 26 seconds West 100.42 feet; thence on a bearing of North 89 degrees 40 minutes 30 seconds West 100 feet to the East right-of-way line of Mainsgate Drive; thence on a bearing of North 19 minutes 30 seconds East 12 feet along said East right-of-way line; thence on a bearing of North 89 degrees 40 minutes 30 seconds West 190 feet to the Southeast corner of Lot 1, Block A, Belmont Place First Addition, Augusta, Butler County, Kansas; thence along the Easterly line of said Belmont Place First Addition with the preceding bearings and distances; thence on a bearing of North 0 degrees 19 minutes 30 seconds East 260.00 feet; thence South 89 degrees 40 minutes 30 seconds East 29.71 feet; thence North 0 degrees 19 minutes 30 seconds East 96.00 feet; thence on a bearing of North 49 degrees 31 minutes 02 seconds West 58.00 feet along the Northeastly line of said Belmont Place First Addition; thence on a bearing of North 40 degrees 28 minutes 58 seconds East 160 feet; thence on a bearing of South 49 degrees 31 minutes 02 seconds East 100.00 feet; thence on a bearing of North 40 degrees 28 minutes 58 seconds East 121.00 feet; thence South 49 degrees 31 minutes 00 seconds East 80.70 feet; thence on a bearing of South 89 degrees 40 minutes 30 seconds East 194.20 feet to the Point of Beginning. Said tract contains 6.38 acres.

Date: November 22, 2006 Raymond M. Hubbell, R.L.S. 757

OWNER'S CERTIFICATE

STATE OF KANSAS }
COUNTY OF BUTLER } ss

This is to certify that the undersigned owner(s) of the land described in the Surveyor's Certificate, have caused the same to be surveyed and subdivided on the accompanying plat into lots, blocks, streets and other public ways under the name of Belmont Place Third Addition, City of Augusta, Butler County, Kansas, and that all highways, streets, alleys, easements and public grounds, as denoted on the plat, are hereby dedicated to and for the use of the public, for the purpose of constructing, operating, maintaining and repairing public improvements; and further, that the land contained herein, is held and shall be conveyed subject to any restrictions, reservations, and covenants on file or hereafter filed in the office of the Register of Deeds of Butler County, Kansas. A Master Drainage Plan is required for this addition before any building can be constructed. All drainage easements shall remain at established grades or as modified with the approval of the applicable City Official, and unobstructed to allow for the conveyance of stormwater.

Date: October 19, 2006 Augusta Developers, L.L.C.
Walter L. Sharp
Walter L. Sharp, Partner
Eric T. Grooms
Eric T. Grooms, Partner

NOTARY CERTIFICATE

STATE OF KANSAS }
COUNTY OF BUTLER } ss

The foregoing instrument was acknowledged before me on this 19th day of October, 2006 by Walter L. Sharp, Eric T. Grooms, Kevin L. Unrein, and Craig A. Sharp, all partners of Augusta Developers, L.L.C.

Lou Ray
Lou Ray, Notary Public

My appointment expires: 4-24-10