

Protective Covenants pertaining to this Addition recorded, Misc 190 Page 482
 Modification and Change of Protective Covenants Applying to this Addition recorded in Misc Book 367 Page 208

314

Concrete Block 33' W. of true corner
 NW Cor. 3W 1/4, Sec. 20, T27S, R3E, of 6th 2nd P.M.
 510'

WILLOWBROOK AN ADDITION IN BUTLER COUNTY, KANSAS

State of Kansas } ss
 County of Sedgwick }
 I, Don C. Moehring, a Civil Engineer in and for said State and County, do hereby certify that I have surveyed and platted WILLOWBROOK an Addition in Butler County, Kansas into Lots, Roads, an Avenue, and a Street. The same being accurately set forth on the accompanying plat and described as: Beginning at the Northwest Corner of the Southwest Quarter of Section 20, Township 27 South, Range 3 East of the 6th 2nd P.M.; thence East along the North line of the Southwest Quarter of said Section 20, a distance of 510 feet; thence South 1290 feet; thence West 510 feet to the West line of said Section 20; thence North 1290 feet to the point of beginning.

Don C. Moehring, C.E.
 Don C. Moehring, C.E.
 Consulting Civil Engineer

Know all men by these presents that we, the undersigned property owners of the land above set forth in the Civil Engineer's certificate, have caused the same to be surveyed and platted into Lots, Roads, an Avenue, and a Street, the same to be known as WILLOWBROOK an Addition in Butler County, Kansas. The Roads, Street, and Avenue are hereby dedicated to and for the use of the public, and easements for the construction and maintenance of public utilities as indicated on the accompanying plat, are hereby granted.

Mary Lee Douglas *Off Douglas*
 State of Kansas } ss
 County of Sedgwick }

Be it remembered that on this 6th day of Aug. 1952, before me, a Notary Public in and for said State and County, came O. H. Douglas and Mary Lee Douglas, his wife, to me personally known to be the same persons who executed the foregoing instrument of writing and duly acknowledge the same as their voluntary act and deed.

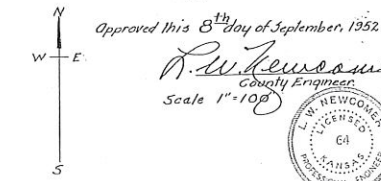
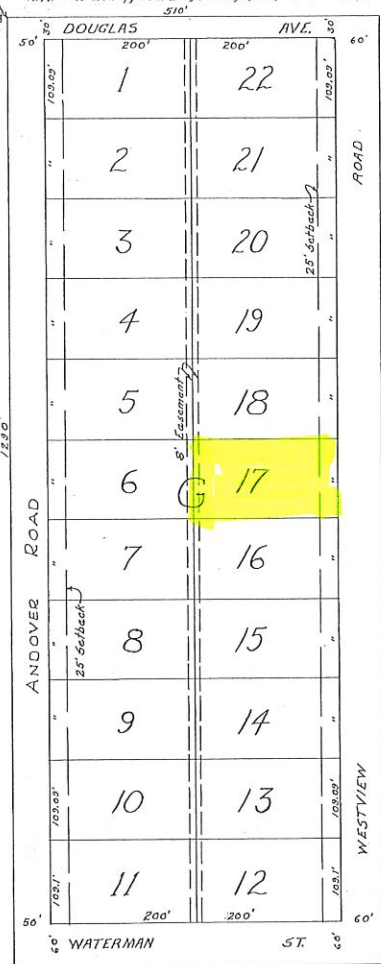
My Commission expires 2/1/56 *Mabel M. Morrison* Notary Public

Approved by the Board of County Commissioners this 9th day of September 1952. *W. H. Boardman* *Mac Jones*
 Butler Co. Comm. Chairman

Entered on transfer record this 13th day of September 1952.
B. C. Hubert, County Clerk

State of Kansas } ss
 County of Butler }
 This is to certify that this instrument was filed for record in the Register of Deeds office on the 9 day of Sept., 1952, at 3:30 o'clock P.M. and is duly recorded.
 Book J, Page 11. *Nina Jones*, Register of Deeds
Opal M. Nye, Deputy

State of Missouri } ss
 County of Jackson }
 Be it remembered that on this 29th day of August 1952, before me, a Notary Public in and for said State and County, came Grant Tortance Vice President and L. Y. Leopold, Assistant Secretary of The Business Men's Assurance Company of America, to me personally known to be the same persons who executed the foregoing instrument of writing and duly acknowledge the same as their voluntary act and deed and the voluntary act and deed of said Company.
 My Commission expires January 12, 1955.
Albena M. Lee, Notary Public



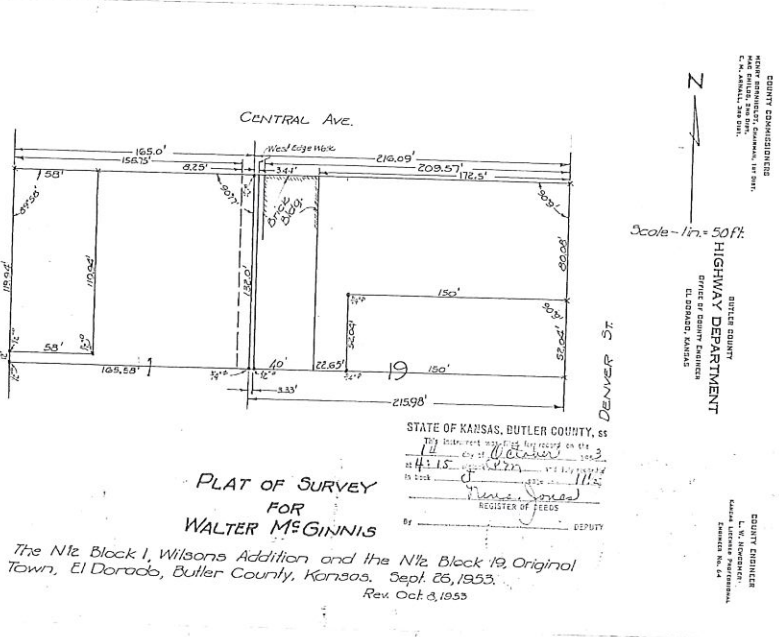
Approved this 8th day of September, 1952.
D. W. Newsome, County Engineer
 Scale 1"=100'



We, The Business Men's Assurance Company of America, mortgagees on the above described property, do hereby consent to the plat of WILLOWBROOK an Addition in Butler County, Kansas.
 Business Men's Assurance Company of America
 Attest: *L. Y. Leopold*, Asst. Secretary
Grant Tortance, Vice President

Declaration of Covenants & Rest. Ct. 1282, Pt. 138

11 1/2

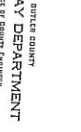


PLAT OF SURVEY FOR WALTER MCGINNIS

The 1/2 Block 1, Wilsons Addition and the 1/2 Block 19, Original Town, El Dorado, Butler County, Kansas. Sept. 26, 1953.
 Rev. Oct. 3, 1953

STATE OF KANSAS, BUTLER COUNTY, ss
 I, *Nina Jones*, Register of Deeds
 do hereby certify that this instrument was filed for record in the Register of Deeds office on the 11th day of September, 1953, at 11:15 a.m. and is duly recorded.
 Book J, Page 11.
Nina Jones, Register of Deeds
Opal M. Nye, Deputy

Scale - 1" = 50 ft.
 BUTLER COUNTY
 HIGHWAY DEPARTMENT
 OFFICE OF COUNTY ENGINEER
 EL DORADO, KANSAS



314