

PLAT.OLD

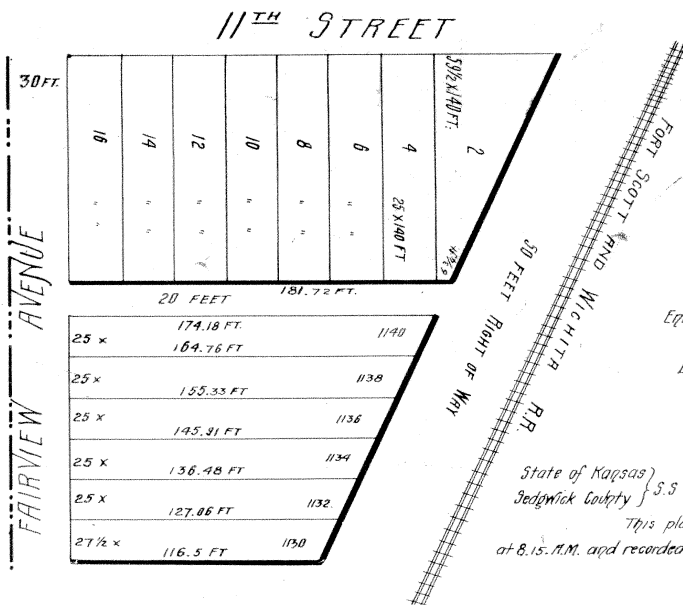
DOCUMENT # 8860205

6/7/1986

SPAUN'S SUB FERRELLS  
ADD

52 5-8

**SPAUN'S SUB-DIVISION**  
OF THE NORTH HALF OF BLOCK "E" FERRELL'S ADDITION TO WICHITA



Entered on Transfer Record  
July 7<sup>th</sup> 1886  
E. P. FORD  
Co. Clerk

State of Kansas }  
Sedgwick County } S.S.  
This plat filed for record July 7 A.D. 1886  
at 8.15. A.M. and recorded in Plat Book F at page 42.  
H. D. Heisermaq  
Register of Deeds.

I, John W. Bear, do certify that I have resurveyed the north one half (1/2) of Block "E" Ferrell's Addition to the city of Wichita, Sedgwick County, Kansas, and platted it as shown by the plat above into Lots, Street and Alley. For length and width of lots see map as shown by figures. For width of Street and Alley see plat. Lots are numbered with red ink - Done at Wichita this 5<sup>th</sup> day of July A.D. 1886.

John W. Bear, C.E.

Know all men by these presents that I, Henry C. Spauld (a single man) employed John W. Bear, to resurvey and plat the north one half (1/2) of Block E in Ferrell's Addition to the City of Wichita, Sedgwick County, Kansas, and sub-divided it into Town lots and surveyed and platted as a town site, and do hereby sub-divide and plat the same into Town lots to be known as Spauld's Sub-division of the north one half of Block E in Ferrell's Addition to the City of Wichita, Sedgwick County, Kansas, and I do hereby acknowledge the platting of the same as is shown by the accompanying plat, and said certificate showing the precise length and width of all lots intended for sale.

Now I, Henry C. Spauld do dedicate to and for the use of the Public all my right, title and interest in and to the Street and Alley in said Spauld's Sub-division to Wichita - Witness my hand this the 5<sup>th</sup> day of July 1886

H. C. SPAULD.

State of Kansas }  
Sedgwick County } S.S.

Be it remembered that on this 5<sup>th</sup> day of July, A.D. 1886, before me a Notary Public in and for Sedgwick County, Kansas, came Henry C. Spauld, (a single man) who is personally known to me, to be the same person who executed the foregoing instrument of writing and acknowledged the execution of the same. Witness my hand and official seal this the 5<sup>th</sup> day of July A.D. 1886.

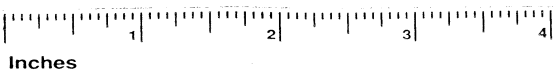
Commission expires February 5<sup>th</sup> 1890.



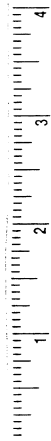
A. T. Owen  
Notary Public.

I, Joseph Bowman, Register of Deeds of Sedgwick County, Kansas, do hereby certify that the above is a true and correct copy of the plat of Spauld's Sub-division of the north one half of Block E in Ferrell's Addition to the City of Wichita, Sedgwick County, Kansas, and that the original of which the above is a copy is on file in my office, and that I have the legal custody thereof. In testimony hereof I have hereunto subscribed my name and affixed my official seal this 2<sup>nd</sup> day of September 1912.

Joseph Bowman  
Register of Deeds.



Inches



Inches



This digital plat record accurately reproduces in all details the original plat filed with the Sedgwick County Register of Deeds. Digitized under the supervision of Register of Deeds Bill Meek by Sedgwick County Geographic Information Systems.

Bill Meek, Register of Deeds  
Digitized rendition of original signature