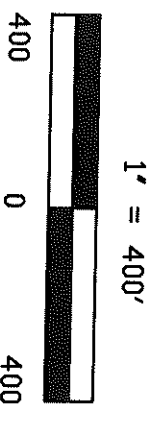
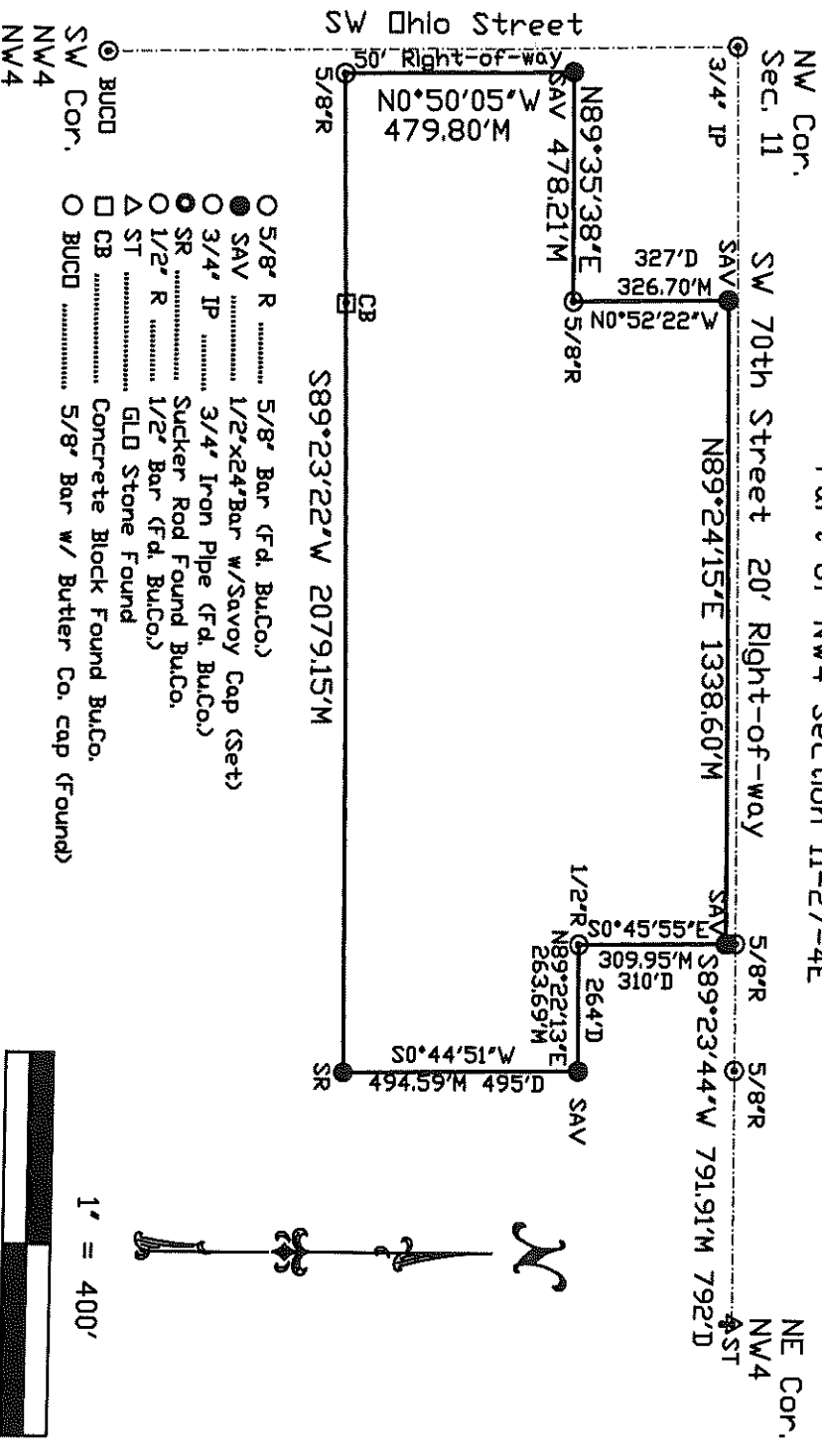


Savoy Company, P.A.
 Land Surveyors
 www.savoyco.com

Wichita, Kansas
 433 S. Hydraulic
 Wichita, KS 67211-1911
 Tel. (316) 265-0005
 Fax. (316) 265-0275

El Dorado, Kansas
 120 N. Main, Suite 3
 El Dorado, KS 67042-2058
 Tel. (316) 452-5552
 Fax. (316) 452-5682

CERTIFICATE OF SURVEY FOR SUDDUTH REALTY
 Part of NW4 Section 11-27-4E



STATE OF KANSAS)
 COUNTY OF BUTLER) SS

We, Savoy Company P.A., Surveyors in aforesaid County and State, do hereby certify that under the supervision of the undersigned, we did on this 7th day of December, 2020, perform a survey of the following described tract Commencing at the Northeast corner of the Northwest Quarter (NW4) of Section 11, Township 27 South, Range 4 East of the Sixth Principal Meridian in Butler County, Kansas; thence S89°23'44"W, along the North line (bearings are taken from NAD83 Kansas South Zone), a distance of 792 feet; thence S00°45'55"E, a distance of 20 feet to the South Right-of-way of SW70th Street and the Point of Beginning; thence continuing S00°45'55"E, a distance of 310 feet; thence N89°22'13"E, a distance of 264 feet; thence S00°44'51"W, a distance of 495 feet; thence S89°23'22"W, a distance of 2079.15 feet to the East Right-of-way line of SW Ohio Street; thence N00°50'05"W, a distance of 479.80 feet; thence N89°35'38"E, a distance of 478.21 feet; thence N00°52'22"W, a distance of 327 feet to a point on the South Right-of-way of SW70th Street; thence N89°24'15"E, along said Right-of-way, a distance of 1338.60 feet to the Point of Beginning. Said tract contains 32.96 Acres.

December 21, 2020

Roger L. Cutsinger
 Roger L. Cutsinger P.S.805

