

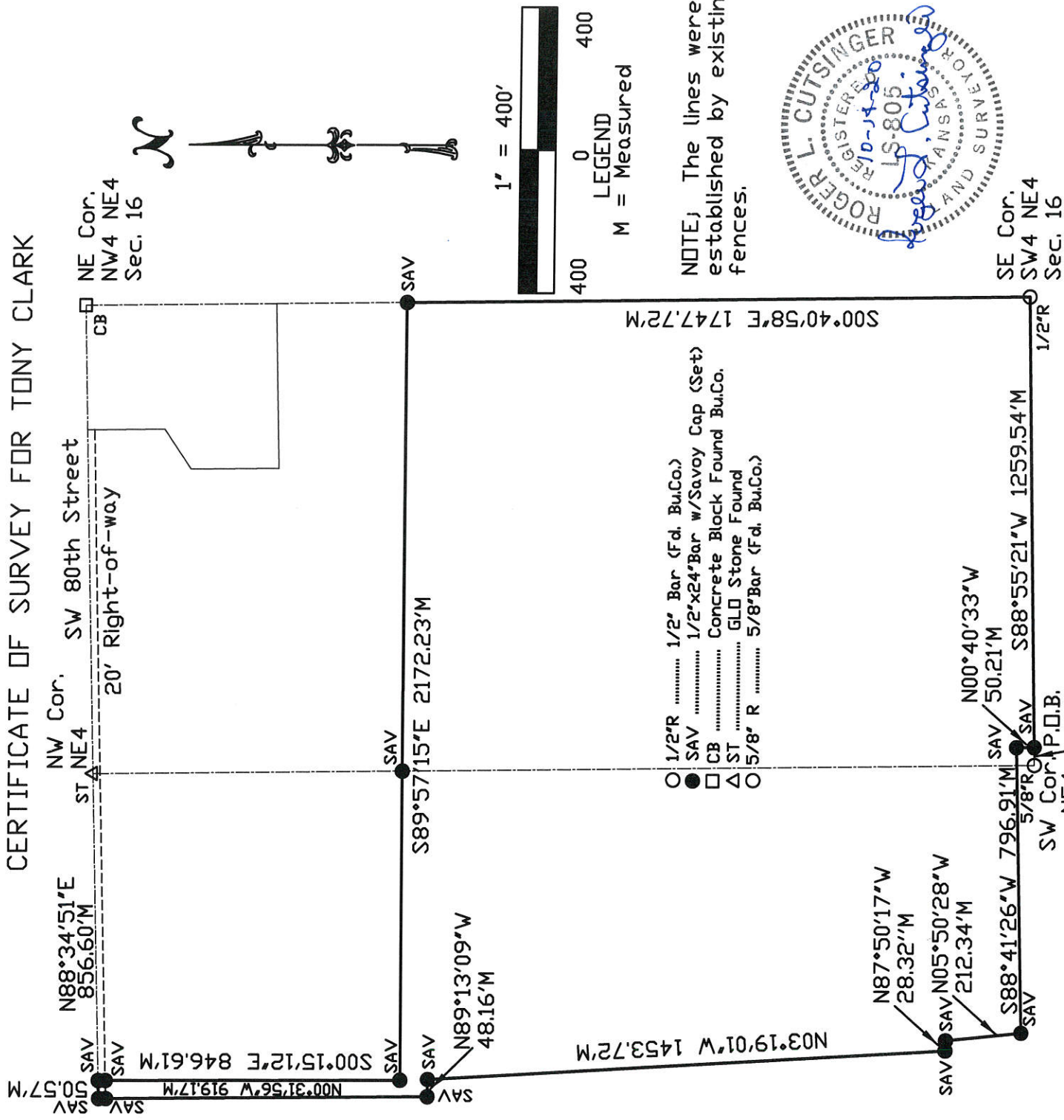


Savoy Company, P.A.
Land Surveyors
www.savoyco.com

Wichita, Kansas
433 S. Hydraulic
Wichita, KS 67211-1911
Tel. (316) 265-0005
Fax. (316) 265-0275

El Dorado, Kansas
120 N. Main, Suite 3
El Dorado, KS 67042-2058
Tel. (316) 452-5552
Fax. (316) 452-5682

CERTIFICATE OF SURVEY FOR TONY CLARK



- 1/2" R 1/2" Bar (Fd. Bu.Co.)
- SAV 1/2"x24" Bar w/Savoy Cap (Set)
- CB Concrete Block Found Bu.Co.
- △ ST GLD Stone Found
- 5/8" R 5/8" Bar (Fd. Bu.Co.)

STATE OF KANSAS
COUNTY OF BUTLER } ss

We, Savoy Company P.A., Surveyors in aforesaid County and State, do hereby certify that under the supervision of the undersigned, we did on this 28th day of September, 2020, perform a survey of the following described tract: Commencing at the Southwest corner of the Northeast Quarter (NE4) of Section 16, Township 27 South, Range 5 East of the Sixth Principal Meridian in Butler County, Kansas; thence East along the South line of said Northeast Quarter (NE4), a distance of 50 feet to the Point of Beginning; thence N00°40'33"W (bearings taken by NAD83 Kansas South Zone), a distance of 50.21 feet; thence S88°41'26"W, a distance of 796.91 feet; thence N05°50'28"W, a distance of 28.32 feet; thence N87°50'17"W, a distance of 212.34 feet; thence N03°19'01"W, a distance of 1453.72 feet; thence S00°15'12"E, a distance of 846.61 feet; thence S00°15'12"E, a distance of 2172.23 feet; thence N89°13'09"W, a distance of 48.16 feet; thence N00°31'56"W, a distance of 919.17 feet to the North line of the Northwest Quarter (NW4) of said Section 16; thence N88°34'51"E, along the North line of said Northwest Quarter (NW4), a distance of 50.57 feet; thence S00°15'12"E, a distance of 846.61 feet; thence S89°57'15"E, a distance of 2172.23 feet; thence S00°40'58"E, a distance of 1747.72 feet to a point on the South line of said Northeast Quarter (NE4); thence S88°55'21"W, a distance of 1259.54 feet to the Point of Beginning. Said tract contains 86.53 Acres.

October 14, 2020

Roger L. Cutsinger
Roger L. Cutsinger P.S.805