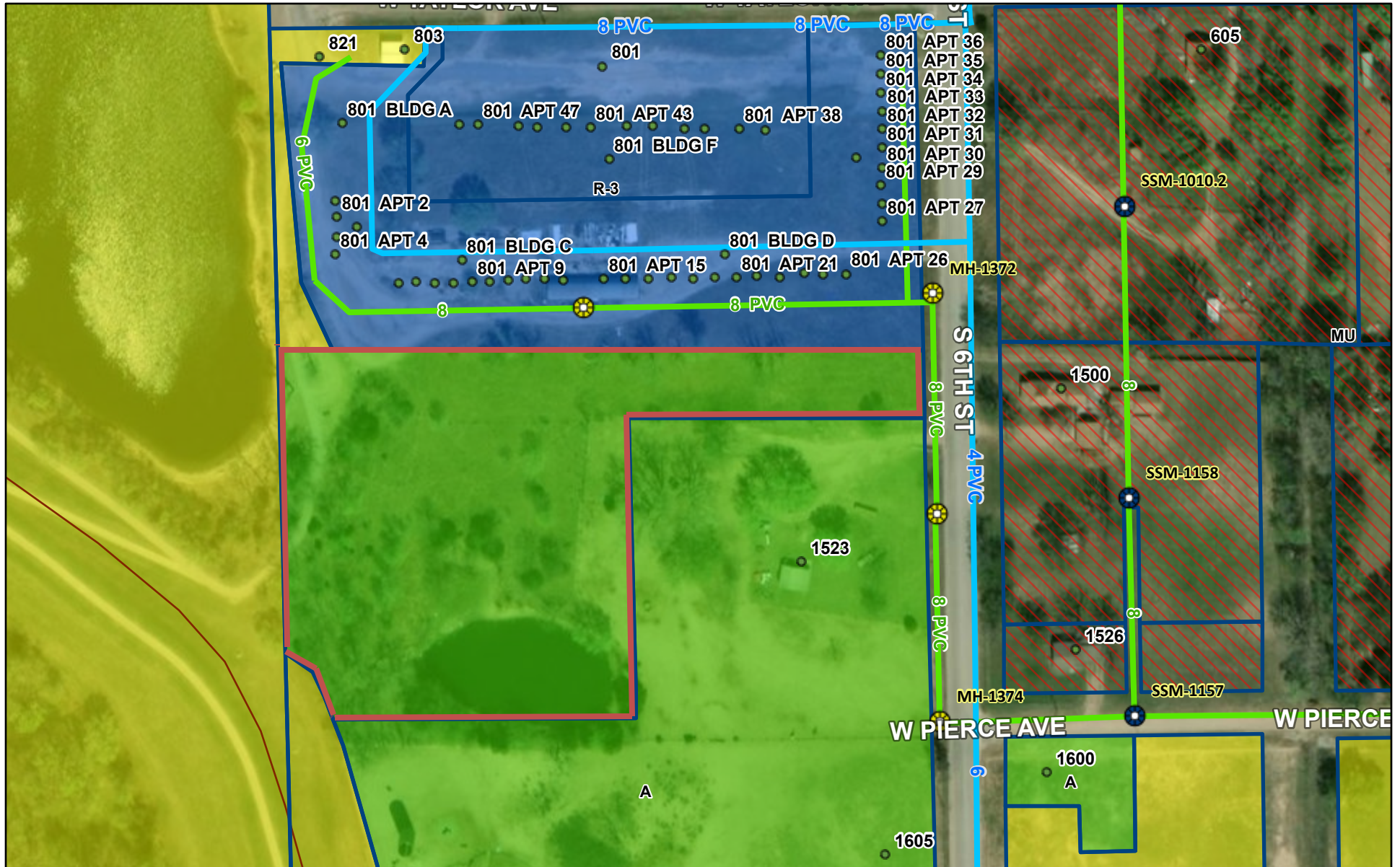


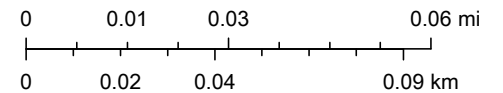
VAC S 6TH ST



4/7/2021, 11:45:36 AM

- | | | | |
|------------------|-----------------------|---------------|--|
| ● Address Points | ● Sewer Manholes | ▬ City Areas | ▬ Streams |
| ▬ Roads | ● Not GPS | ▬ County Line | ▬ Lakes and Ponds |
| ▬ Water Mains | ● GPS | ▬ State Line | ▬ Zoning Districts_Base Districts |
| ▬ Potable Water | ▬ Sewer Gravity Mains | ▬ Parcels | ▬ A, Agricultural District |
| | | | ▬ R-3, High Density Residential District |

1:2,257



GeoEye, Maxar, Microsoft