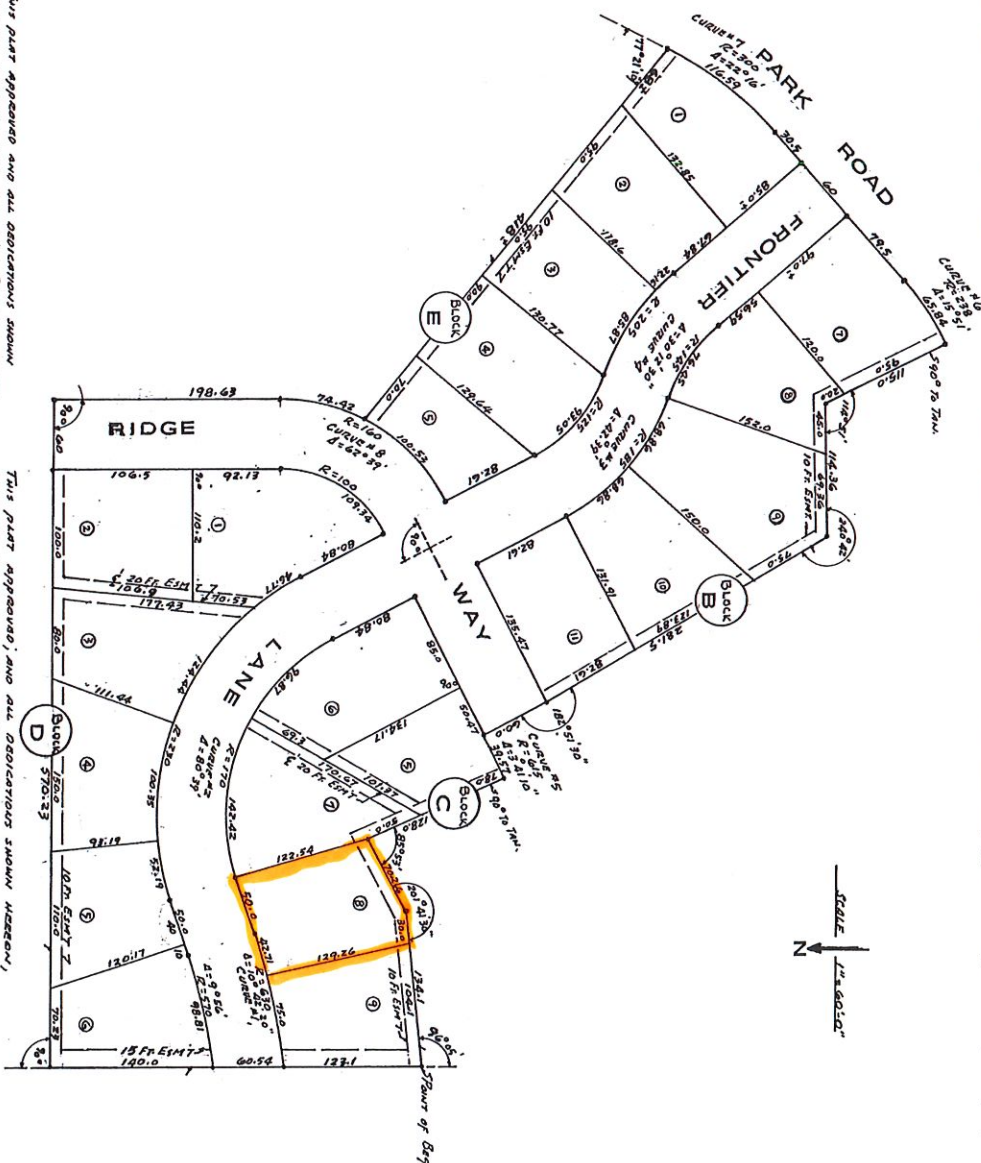


# HARRIS HEIGHTS THIRD

ADDIT  
ROSE HILL, BUTLER CO., KANSAS



of Kansas, County of Butte, SS:  
I, Ray L. Perkins, a Licensed Professional Engineer in the State of Kansas, do hereby certify that on this 10th day of October, 1975 that I have surveyed and located the Harris Heights Third Addition to East Hill, Butte County, Kansas and the surveying plan is a true and correct exhibit of a tract of land in the West 1/2 of Section 32, Township 28 South, Range 3 East of the 11th (27) Meridian in Butte County, Kansas, described as follows:

Beginning at a point 921.57 feet north on the West line of said SW 1/4 and 200 feet right angles of the 1/4th corner of said SW 1/4; thence easterly at an interior angle of 96° 03', 136.1 feet thence northeasterly at an interior angle of 201° 01' 30" left; thence southeasterly at an interior angle of 83° 53', 180 feet thence westerly on a curve to the left having a radius of 4150 feet and deflection of 39° 41' 03", a distance of 39.57 feet, the tangent of said curve being 90.70 to various corners; thence southeasterly on a radius of said curve being 90.70 to various corners; thence southeasterly at an interior angle of 182° 51' 30", 281.5 feet; thence easterly at an interior angle of 240° 42', 14.36 feet; thence southeasterly at an interior angle of 14° 51', 150 feet; thence northeasterly on a curve to the left at a radius of 2380 feet and deflection angle of 15° 51', a distance of 65.84 feet to the point of tangency (RT) of said curve; the tangent of said curve being the previous course; thence northeasterly on a tangent to said curve, 170.0 feet to the point of curvature (PC) of a curve; thence on a curve to the left at a radius of 300.0 feet and a deflection angle of 22° 16', a distance of 300.0 feet; thence northeasterly at an interior angle of 77° 01' 10", from the tangent previous course, a distance of 418.5 feet to a point on a curve which radius of 160.0 feet and a deflection angle, to the point, from the point of curvature (PC) which point is the southeasterly corner of the intersection of said curve and Frontier Lane, 38.0', a distance of 108.53 feet; thence northeasterly on a curve to the left at a radius of 26.37, from said point to the point of tangency (PT), a distance of 74.42 feet; thence north on a tangent to previous course a distance of 198.62 feet; thence west at a right angle a distance of 353.64 feet to the point of beginning.

of Kansas, County of Sedgewick, SS:  
I, Ray L. Perkins, a Licensed Professional Engineer in the State of Kansas, do hereby certify that on this 10th day of October, 1975 because me, a surveyor, was not present on the day of recording the foregoing instrument of warranty, I hereby acknowledge the execution of same. As the act and deed of said day and year above mentioned, I have hereunto set my hand and seal of said day and year above mentioned.

Witness my hand and seal of said day and year above mentioned, at the City of Topeka, Kansas, this 10th day of October, 1975.

Witness my hand and seal of said day and year above mentioned, at the City of Topeka, Kansas, this 10th day of October, 1975.

This plat approved and all restrictions shown hereon, accepted by the Board of Commissioners of the County of Butte, Kansas, on this 10th day of October, 1975.

This plat approved and all restrictions shown hereon, accepted by the Board of Commissioners of the County of Butte, Kansas, on this 10th day of October, 1975.

