

PARK PLACE SUBDIVISION  
IN THE  
SOUTH 1/2 OF THE SW 1/4 OF SECTION 15-T27S-R4E AND NORTH 1/2 OF THE NW 1/4 OF SECTION 22-T2  
1948 68

Scale 1"=100'  
 ••• 1/4" Square bars  
 □ Concrete blocks



PLIFICATE OF SURVEY—  
 Surveyor for Butler County, Kansas do hereby certify that I  
 the subdivision and that the accompanying plat is a true and  
 bed as follows:— Beginning at the SE Corner of the NE 1/4 of the  
 one North along the East 1/2 of said NE 1/4 of Section 22-  
 or less) to the NE Corner of the NW 1/4 of Section 22-  
 of the SE 1/4 of Section 15-T27S-R4E a distance of  
 44 ft to a point on the East line of the SW 1/4 of said  
 along the East line of the SW 1/4 of said Section 15  
 the South line of said Section 15-T27S-R4E to a point on the  
 the NW 1/4 of the NW 1/4 of Section 22-T27S-R4E to a point on the  
 said Section 22, thence East 1325.42 ft to point of Beginning.

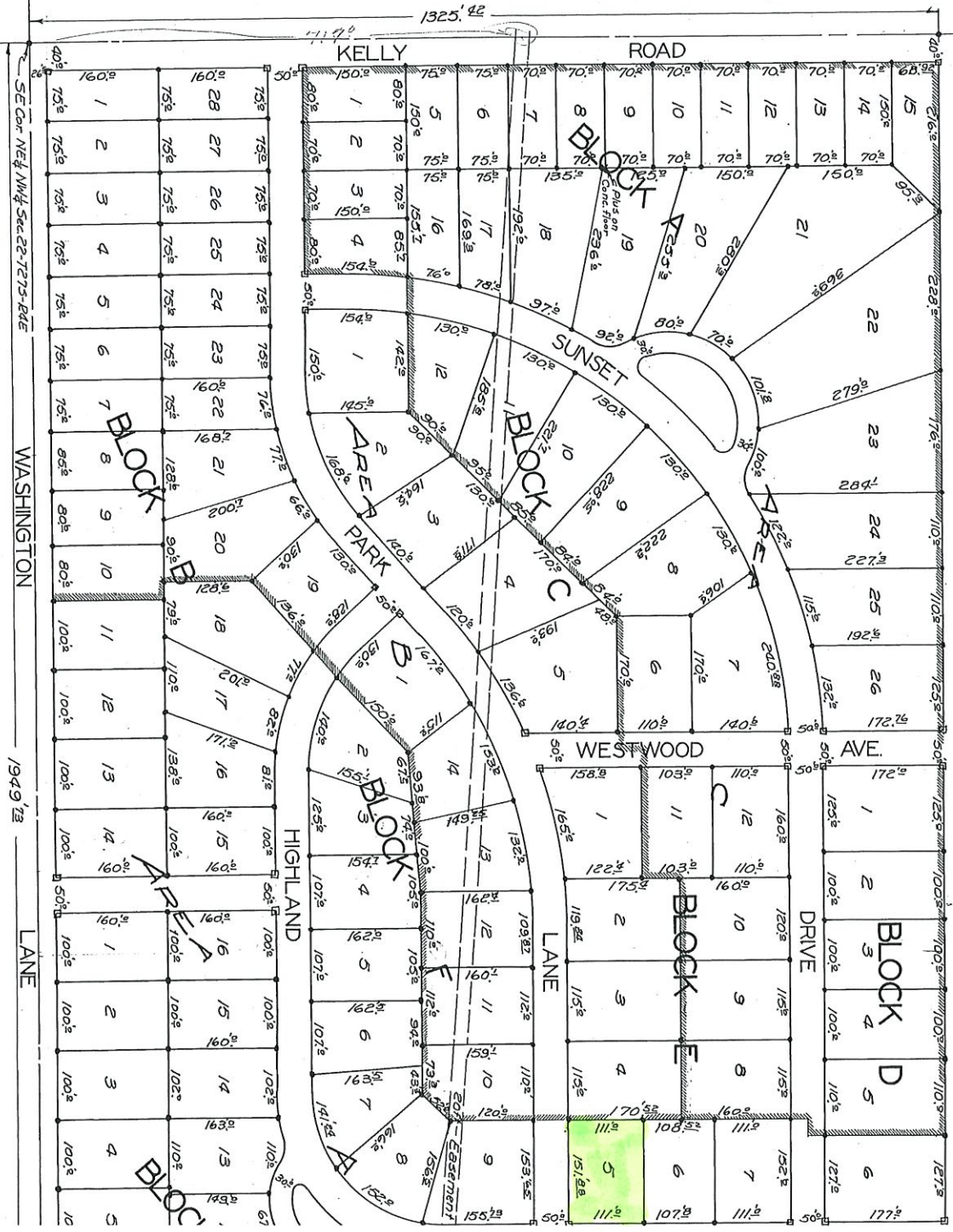
*D. W. Murrain*  
 County Engineer

Development Co., do hereby certify that we are the owners of the  
 of Survey and that this plat is filed for the purpose of  
 The divisions of all the several parcels of ground into which  
 indicated by figures on the face of this plat, the measurements  
 a foot. All streets and alleys included in this subdivision  
 the plat and intended to be and are hereby dedicated to and  
 highways.

*Robert E. Currell* Pres.  
 Augusta Land and Development Co.  
 (A corporation)

7/28/25 day of April, 1947, before me, the undersigned a  
 1 and State attested, came Robert E. Currell, a representative  
 not Co., who is personally known to me to be the same person  
 ment of writing and such person duly acknowledge the execution of  
 hereunto set my hand and affixed my official seal the day and  
 1947  
 Notary Public

5. For record on the 28 day of April, 1947, at 2 o'clock P.M. and  
*Conrad R. Bush*  
 Register of Deeds



==== = Area boundary lines